



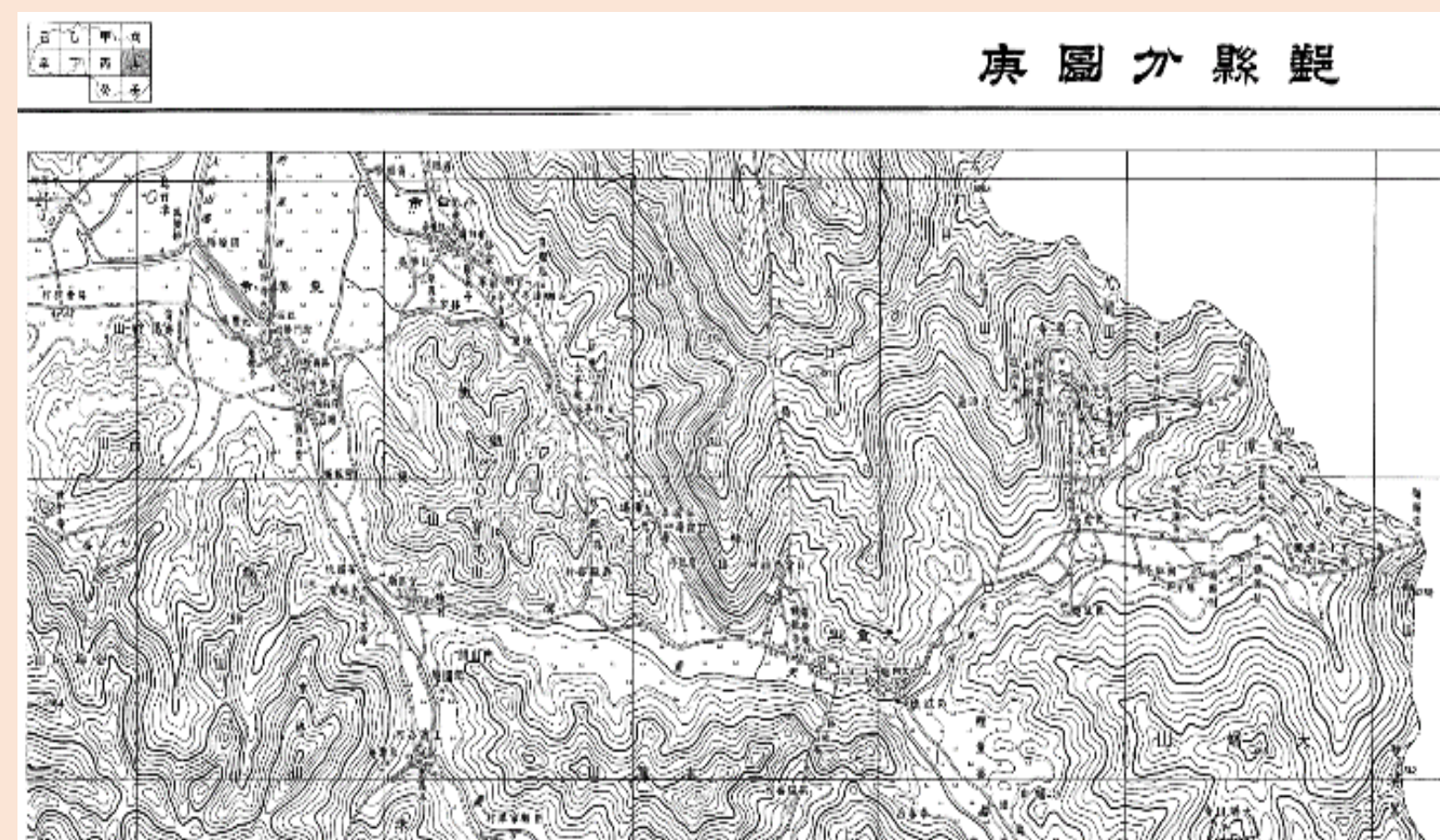
# City Life Research

## A Digital Humanities Project at University of Nottingham Ningbo China

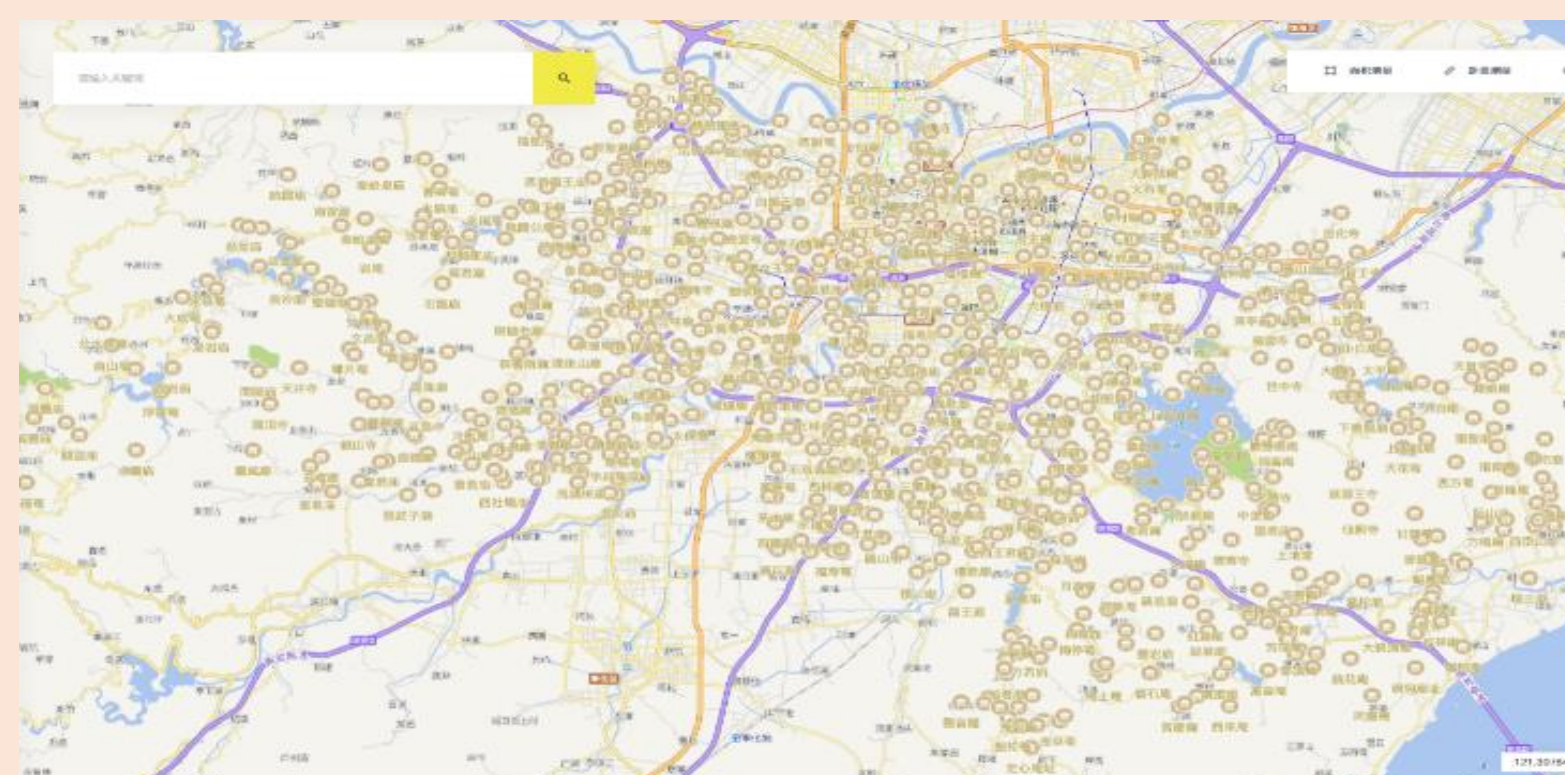
Yuting He<sup>1</sup>, Wenbo Wu<sup>2</sup>, Lulu Qiu<sup>2, \*</sup>  
The University of Sydney, Sydney, Australia  
University of Nottingham Ningbo China, Ningbo 315100, China  
\* Corresponding author: Lulu Qiu, E-mail: [lulu.qiu@nottingham.edu.cn](mailto:lulu.qiu@nottingham.edu.cn)

The Ningbo History Digital Humanities Project has been launched collectively by a group of scholars and librarians since 2019 at the University of Nottingham Ningbo China. Based on a set of 26 historical maps of the city published by the Republican Government in the 1930s, the project constructed a Geographic Information System-based database as a platform to visualise and preserve the historical data in various aspects of urban life, including urban administration and landscape, domestic and foreign trade, religion, literature, architecture, water management, health, and education.

Mapping the Geographical Data from  
old maps, to excel and then online GIS

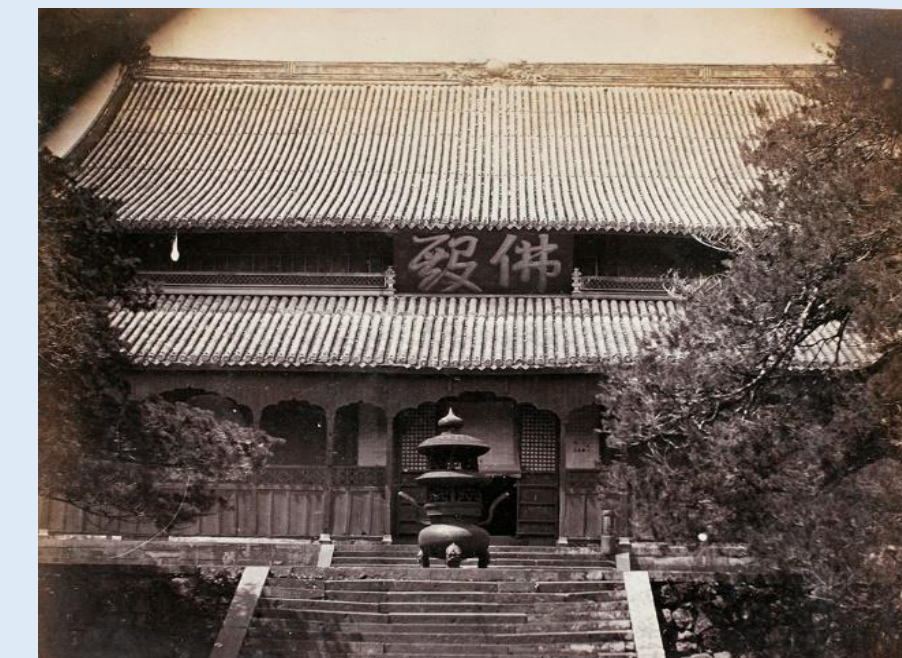


地圖左一列	地圖左二列	地圖左三列	地圖左四列	地圖左五列	地圖左六列	地圖左七列
世中寺	觀音菴	資福寺	損讓亭	天童寺	老天童寺	鎮頭堂
天華庵	資壽寺	白華亭	甘露庵	伏慈庵	雲龍庵	祖宅廟
關帝殿	大廟	關帝殿	廣濟庵	太白廟	順娘廟	新安寺
土地堂	觀音堂	小白廟	在中庵	關聖廟	塔寺	振古寺
	永福庵	白華菴	在中菴	西方菴	大鐘山寺	慧日庵
	永壽庵	真際庵	八坵田菴	指慈菴	峰山廟	上保廟
		三官殿	上書龍廟	朱山寺	指南菴	山居庵
		永古菴	單峯菴		寶峰庵	中保廟
		新菴	天花菴		阮山寺	景松庵
		太平庵	甘露菴		方橋廟	岱山廟
		合溪廟	清華菴		廣福庵	西岱山廟
		祇園庵			舵幢廟	裴將軍廟 (地圖左)
		忠義亭				裴將軍廟 (地圖右)
		下書龍廟				關帝廟
		中書龍廟				
		延壽王寺				
		仙照寺				



In addition to mapping the historical data with the location, the project team uploaded the textual descriptions, related tales, related people's deeds, transnational linkages. Parallel to that, the project team also collected 177 historical photos taken by foreign travellers in the second half of the 19th century, attempting to build a historical database about urban life and architecture.

Historical Captions and Historical Photos



Furthermore, the team is also collecting and carrying out the digitalisation of historical data on other thematic subjects around all aspects about the history of Ningbo, for example, digital scanning and modelling of historical building.

3D Modeling of Triple Zaojing,  
The ceiling of ancient Chinese architecture



With the digital outputs, two cultural produced have been designed and produced, Zaojing Tea Cups and Incense Holder, which have been very popular.

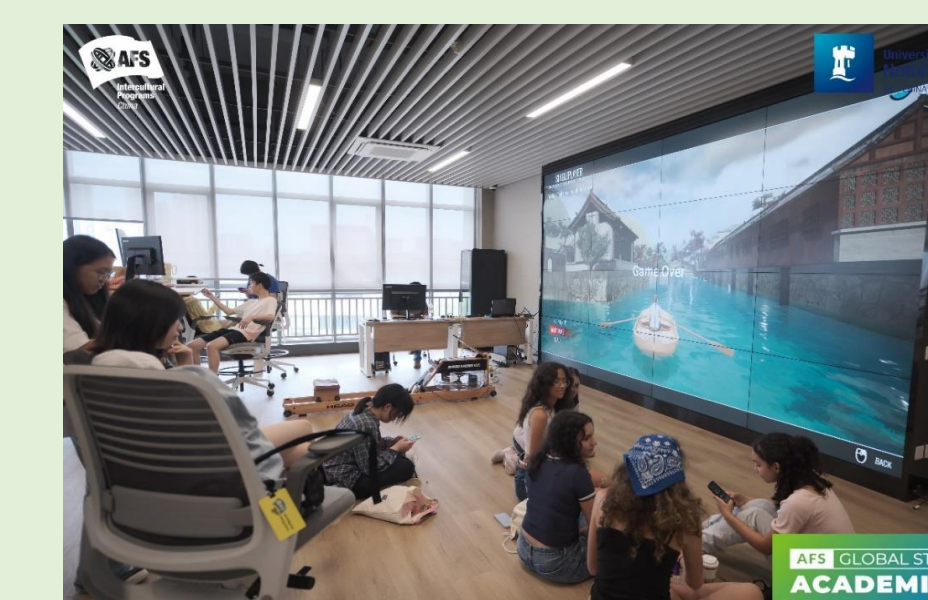


Based on the project content, the project team has been conducting public outreach through exhibitions and participatory activities since 2021.

Exhibitions



Participatory Activities



Learn more about the project:

[dhlabs.nottingham.edu.cn](http://dhlabs.nottingham.edu.cn)

